



Winston Churchill



High School

# The International Baccalaureate Program



WINSTON CHURCHILL

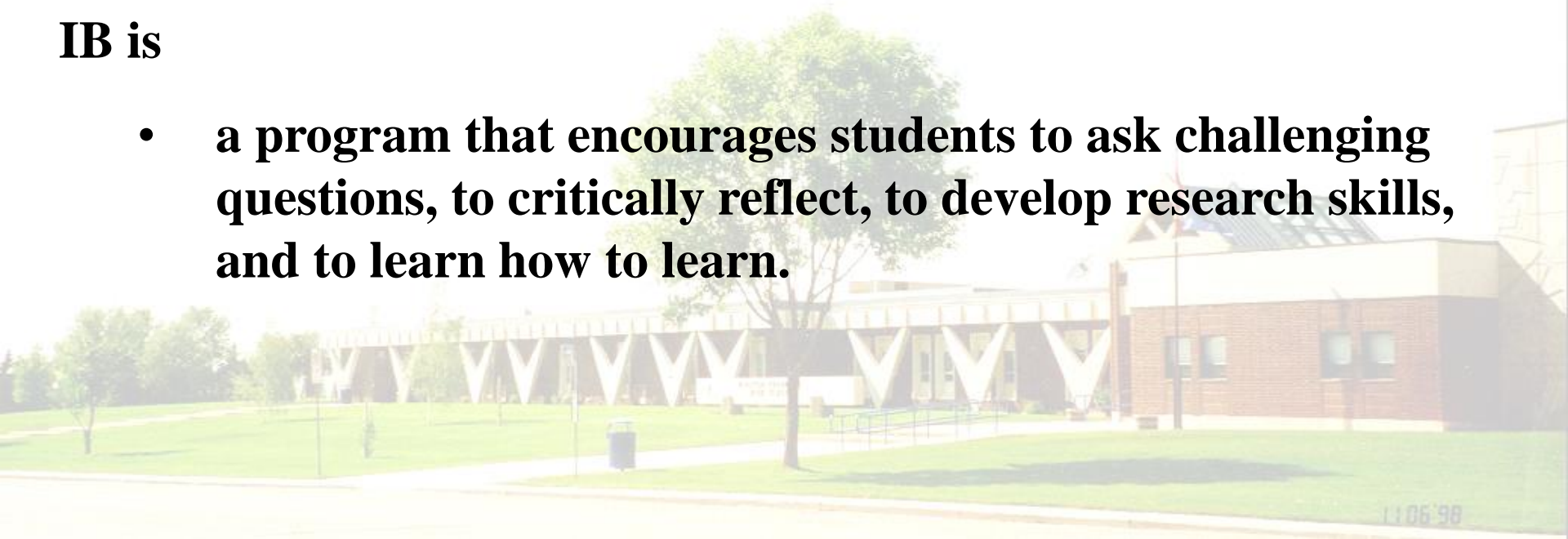


[www.wchs.lethsd.ab.ca](http://www.wchs.lethsd.ab.ca)



## **IB is**

- **a program that encourages students to ask challenging questions, to critically reflect, to develop research skills, and to learn how to learn.**





# IB Learner Profile

*Inquirers*

*Knowledgeable*

*Thinkers*

*Communicators*

*Principled*

*Caring*

*Open-minded*

*Risk-takers*

*Balanced*

*Reflective*

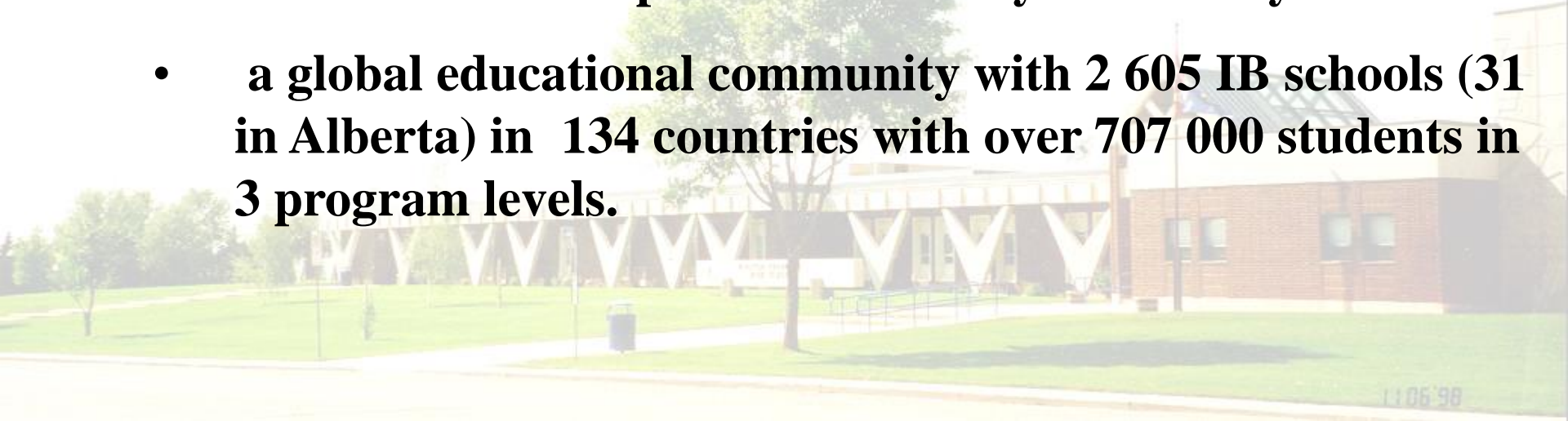


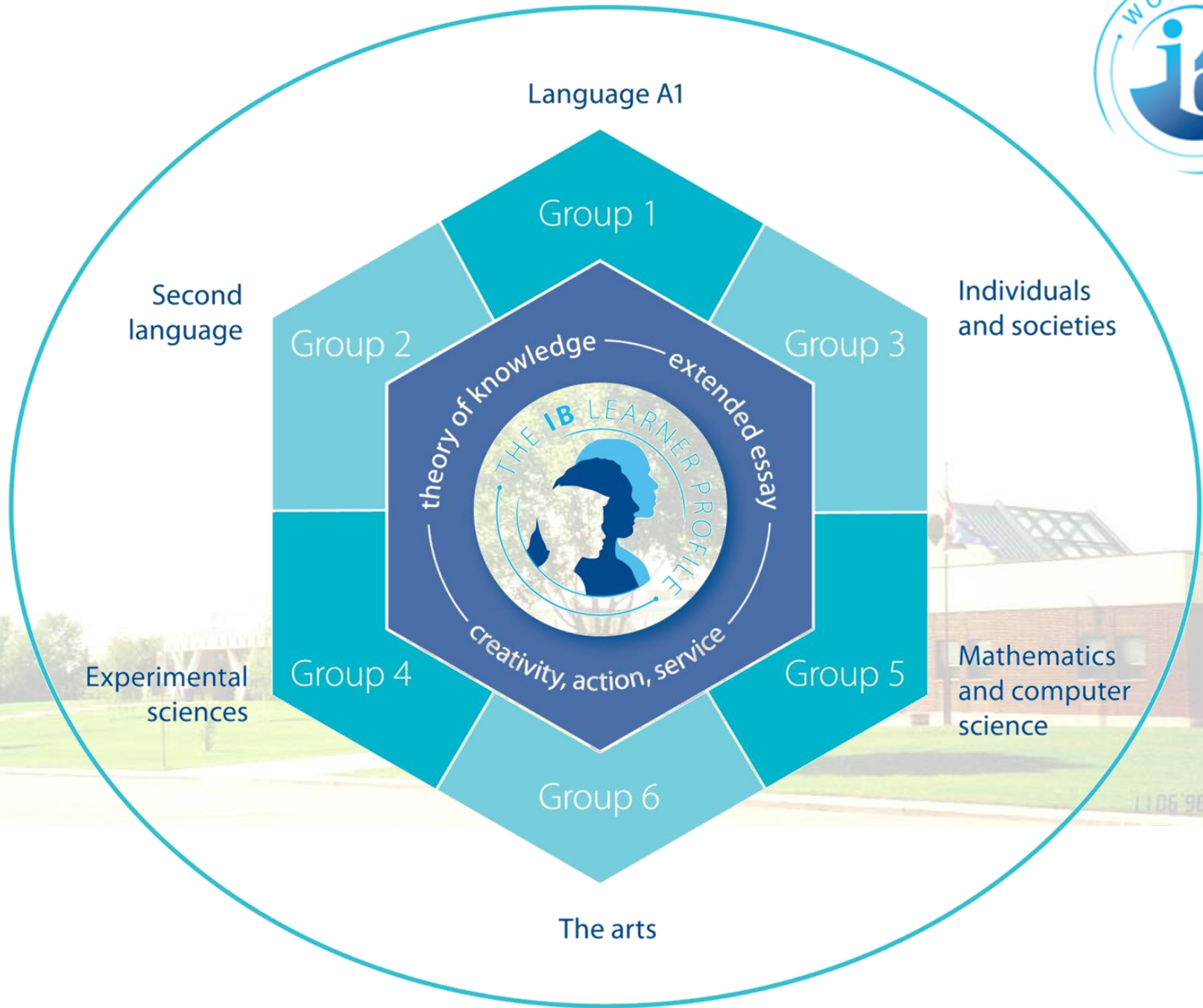


## Background

IB is

- **a program that encourages students to be active learners, well-rounded individuals and engaged world citizens.**
- **a curriculum representing the best from many countries rather than the exported national system of any one.**
- **a global educational community with 2 605 IB schools (31 in Alberta) in 134 countries with over 707 000 students in 3 program levels.**







# **The Program: course work in six subjects.**

**Group 1 – Language A1 (English)**

**Group 2 – Second Language (French, Spanish, other)**

**Group 3 – Individuals & Society (Global Politics)**

**Group 4 – Experimental Science (Biology)**

**Group 5 – Mathematics**

**Group 6 – Option/The Arts (Chemistry, Art, Drama, Music)**





## **Additional Requirements:**

### **1. Theory of Knowledge (ToK)**

- A program over two years focusing on *Ways of Knowing*, *Problems of Knowledge* and *Areas of Knowledge*.
- A 1200-1400 word essay on one of ten prescribed titles.

### **2. Extended Essay**

- A substantial piece of independent research of about 4000 words in a subject chosen by the student.

### **3. Creativity, Action & Service (CAS)**

- two years devoted to CAS with time devoted to each of the three areas.





# Full Diploma Schedule

Grade 10		Grade 11		Grade 12	
Semester 1	Semester 2	Semester 1	Semester 2	Semester 1	Semester 2
English 10i	Spanish or French 10i	English 20i	Social 20i	English 30i	World Lit 25i
Science 10i	Social 10i	Biology 20i	Spanish or French 20i	Social 30i	World History 25i
Math 10i	Math 20i	Math 30i	Math 31i	Biology 30i	Biology 25i
Option	PE – CALM	Chemistry 20i or Art 20i or Music 20i or Drama 20i	Physics 20 or Option	Chemistry 30i or Art 30i or Music 30i or Drama 30i	Chemistry 25i  French or Spanish 30i





# So why International Baccalaureate?

## IB Challenges

Is a rigorous academic program

Will be challenging and stimulating for academically motivated students

Is a 'global' program in which students around the world share a common curriculum and examinations

## IB Benefits

Receive excellent preparation for university

Improve reading and writing skills

Upgrade time management skills

Be grouped with other students of similar academic abilities

Have teachers that have received professional development necessary for teaching IB

# Questions?

